



Market Leader In Accuracy

Welcome to Huma-Air. We design and manufacture brand- and model specific precision regulators for PCP air rifles.

By using only the highest quality materials such as aircraft grade aluminum, aluminum-bronze, chrome-moly steel and precision belleville springs, our ultra-compact regulators are high performing.

Huben K1 outside adjustable regulator set

HUMA-AIR



For adjustment tips, frequently asked questions and a complete list of installation manuals and instructions on how to adjust your Huma-Air regulator

<https://www.huma-air.com/Fitting-instructions>



Or go there directly by scanning the QR code

**Before you start, realize this:**

- Working on a high pressure rifle could potentially be harmful or lethal to you or bystanders if you do not know what you are doing.
- The pictures of the rifle parts in this manual are universal and used as an example to explain the working principle. They might not be equal to the parts in your rifle.
- Do not attempt to install this regulator yourself if you do not have a clear understanding of how these pcp rifles and regulators work.
- Do not attempt to install this regulator if you are not skilled to work on an air rifle; contact your local gunsmith to do the fitting.
- Installation and operation is done completely at your own risk.
- Installing this regulator might void your rifle's factory warranty.
- Your rifle may never be filled higher in pressure as stated in your rifle's manual.
- Do not attempt to fit this regulator in another rifle as mentioned in our order confirmation.
- These regulators are not suitable to use as a CO2 to HPA conversion, this could potentially be harmful or lethal to you or bystanders.
- We cannot be held liable for any accidents in relation to this regulator and its installation.

Before you start, make sure that the rifle is unloaded, remove the magazine and make absolutely sure ALL the air is drained from the pressure tube. If there is a pressure gauge, it will give you just an indication. Dry fire the rifle or follow the manufacturer's instructions and double check to make sure all the air is out of the rifle



If the regulator is fitted and there is no output pressure after filling the pressure tube, something might be wrong causing the airflow to block totally.

Please beware even though there is no output pressure, the pressure tube/bottle is fully charged with high pressure air!!

If you are not able to relieve the pressure of the pressure tube according to the manufacturer's instructions or by dry firing the rifle then:

Contact a professional gunsmith to retrieve a solution!

- **DO NOT try to unscrew or to open the pressure tube in any way.**
- **DO NOT try to pierce/drill or to use force to open the pressure tube or unscrew parts in an attempt to relieve the blocked pressure.**
- **These actions can cause serious injury or death to you or bystanders**

Before you start, we would like to advise you to read our manual how to [read and adjust the regulator pressure](#) and our [General Adjustment Tips](#) to set up your rifle perfect.

Before you start, read the full manual.

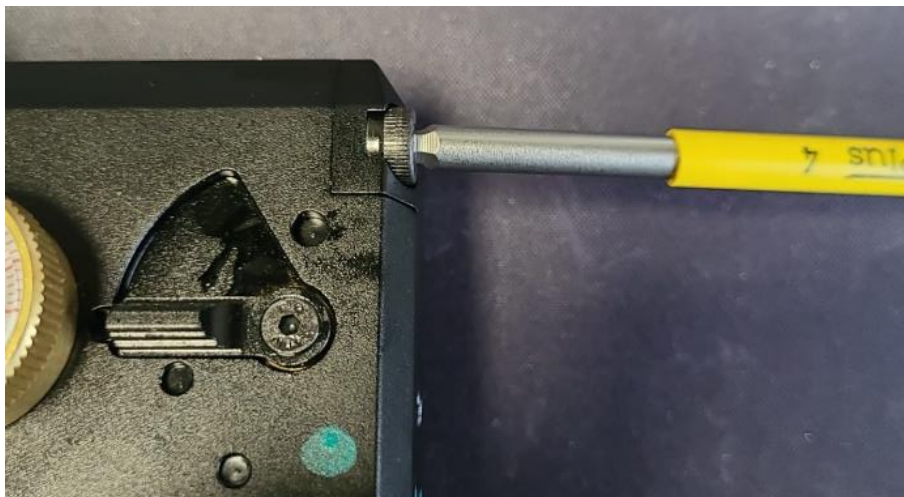
This manual is a guideline and can be different in detail compared to your rifle.

Important Safety Notes:

- These regulators are not suitable for stand-alone pressure bottles/buddy bottles.
- The maximum working pressure of this model is 350 Bar.
- Do not exceed the factory advised fill pressure of your rifle!

Fitting of the regulator

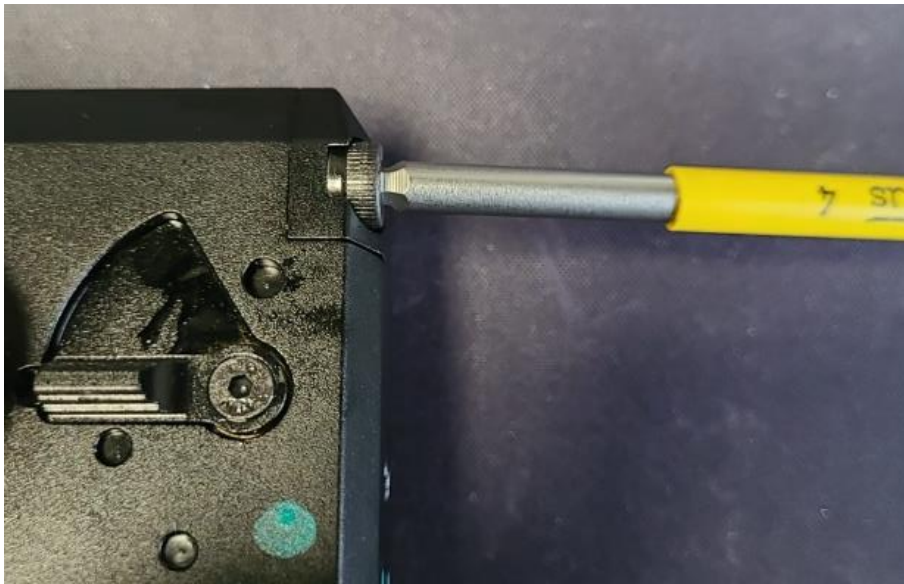
We will first start to vent the K1. The easiest way to do so is to remove the valve reset spring and fire a shot. To do this first unscrew the two M5 screws that hold the backplate using a 4mm hex key and remove it.



Remove the spring that now shows, but keep the rubber buffer in the hole.



Reinstall the backplate so the valve is not launched across the room!



Now fire a shot in a safe direction with the unloaded gun. The valve will not reset and the gun will slowly vent till it is completely empty

Removing the stock

Remove the power adjustment wheel



And using a circlip plyer remove the securing nut

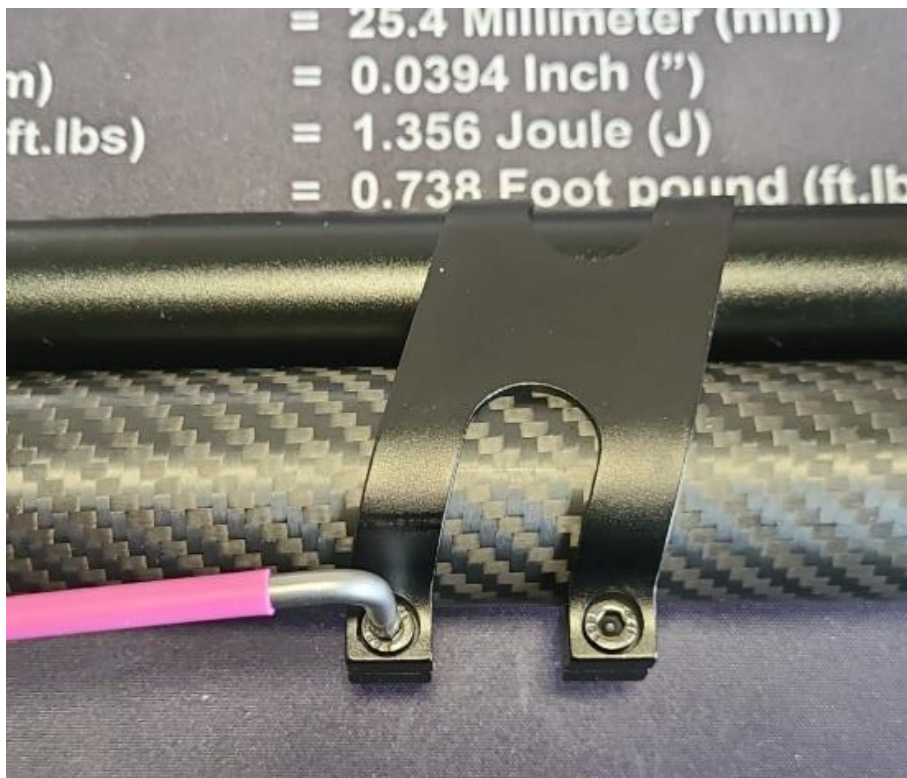


Push out the pin that holds the front of the stock



The action can now be taken out of the stock

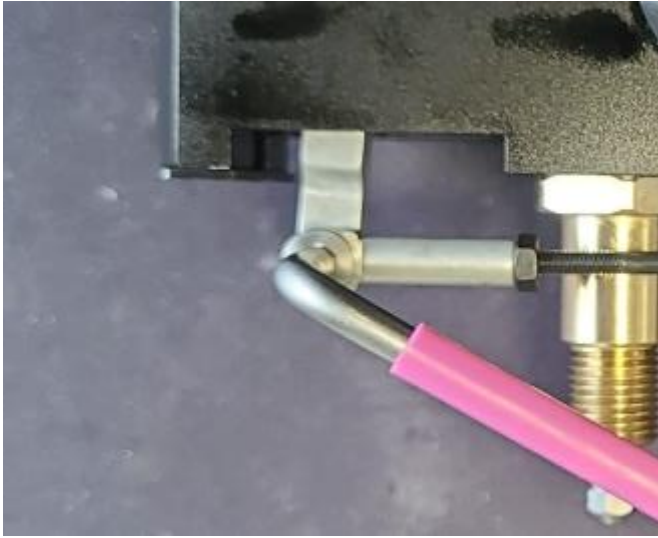
loosen the front barrel band screws and slide of the barrel band



Do the same with the 3 screws on the picatinny rail.

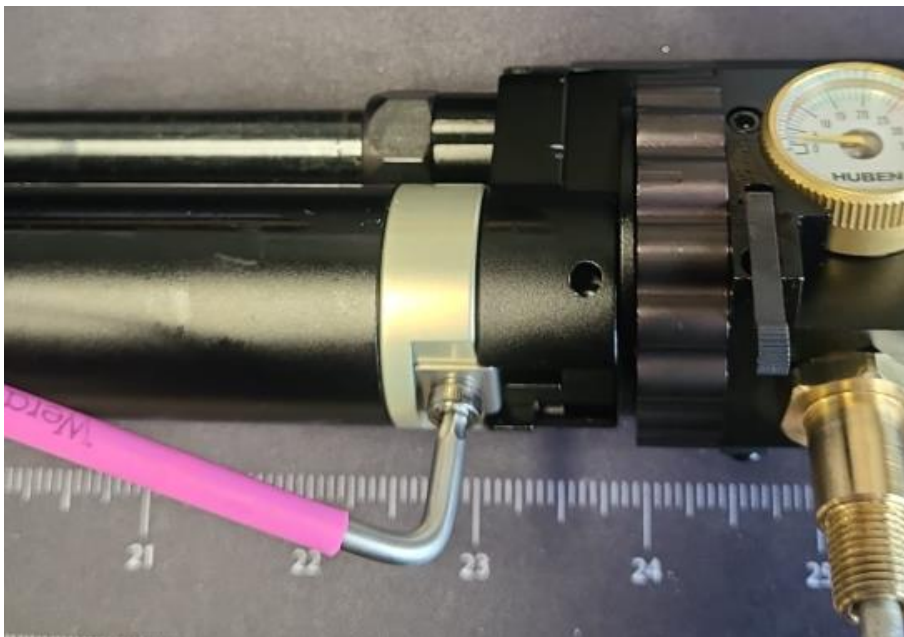


Unscrew the trigger bar screw

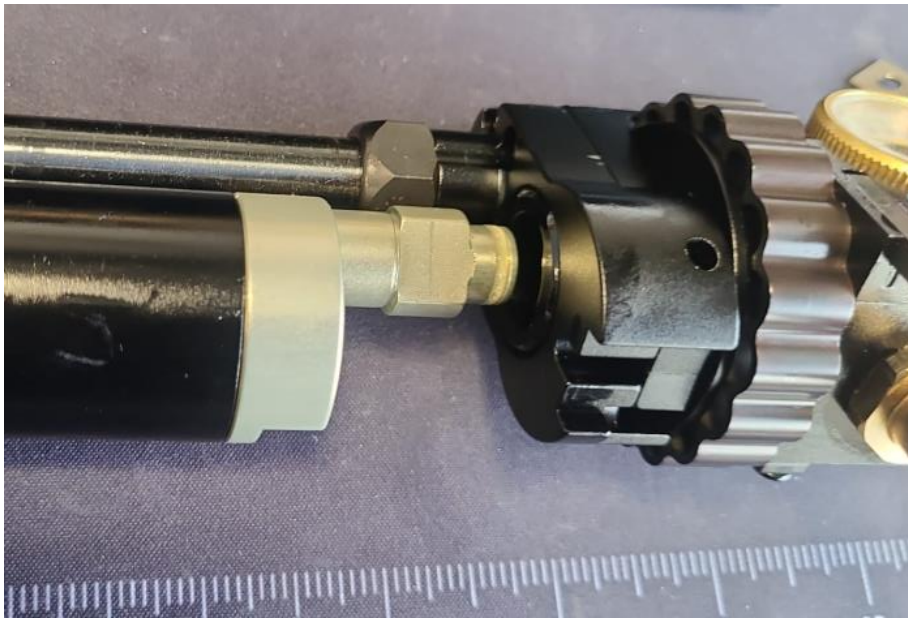


The whole rail/shroud assembly can now be slid off the barrel and tube. As well as the plastic cover behind the picatinny.

First make absolutely sure that the tube is empty before you resume with the following steps.
Unscrew the locating tab



Turn the tube assembly clockwise to unlock the lugs and pull out the tube from the action.

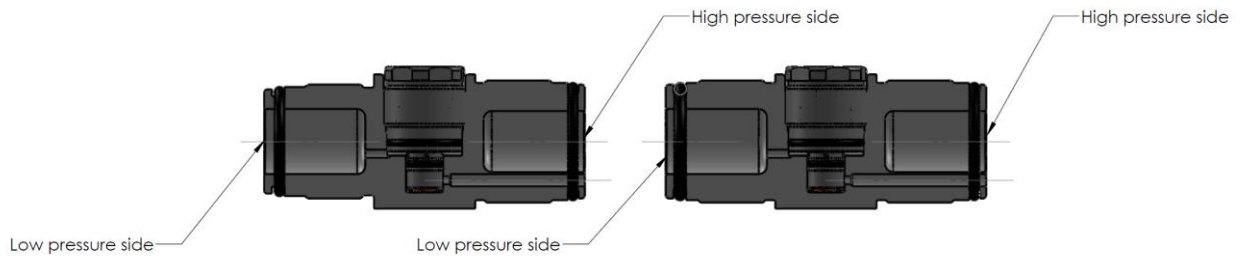


Now unscrew the regulator from the tube and plenum.

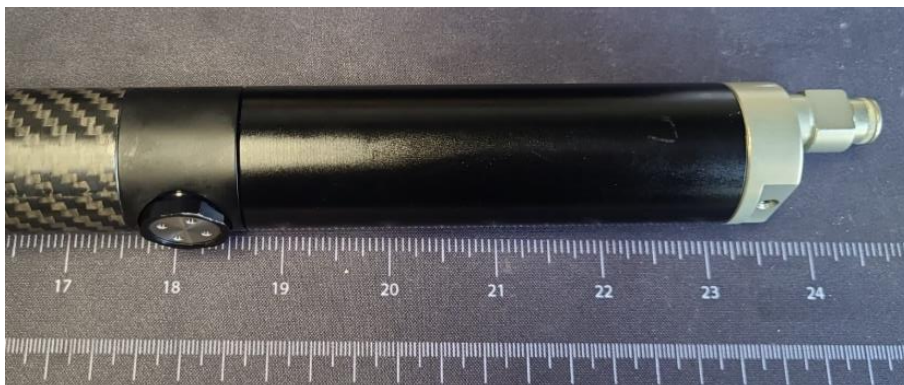


Now take your HuMa-Air regulator and screw it in as the old one was:

On the 2021 upto current model the regulator will only screw in one way as the threads on both sides are different. But the <2021 version has the same thread on both sides. So make sure the orientation is correct.



The correct orientation can be seen above, the side with the smaller hole underneath the big central hole is the high pressure side. The one with only a larger center hole is the low pressure side.



Make sure the regulator and the endplug are aligned



Now reinstall everything in reverse order to the above instructions.

To adjust the regulator. Please note that the regulator can only be adjusted upwards under pressure. If you need to lower the pressure first degass the rifle.

The tested pressure is written on the packaging. To increase pressure turn the stainless steel piece with the 4 holes counter clockwise. A $\frac{1}{4}$ turn counter clockwise gives an increase of about 26bar. You can use a small circlip plyer to adjust the regulator.



Enjoy your HuMa-Air tuned Huben K1.