

# HUMA-AIR.COM

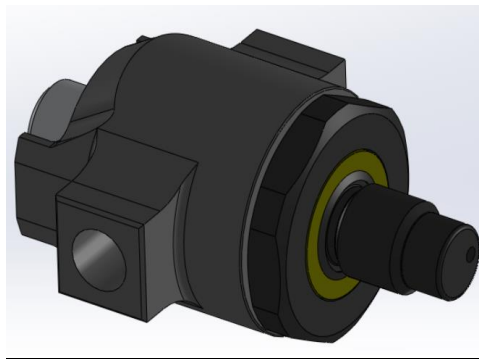
*Market Leader In Accuracy*

**Welcome to Huma-Air. We design and manufacture brand- and model specific precision regulators for PCP air rifles.**

---

By using only the highest quality materials such as aircraft grade aluminum, aluminum-bronze, chrome-moly steel and precision belleville springs, our ultra-compact regulators are high performing.

**Installation guide FX Panthera first stage replacement regulator**



For adjustment tips, frequently asked questions and a complete list of installation manuals and instructions on how to adjust your Huma-Air regulator

<https://www.huma-air.com/Fitting-instructions>



Or go there directly by scanning the QR code

**Before you start, realize this:**

- Working on a high pressure rifle could potentially be harmful or lethal to you or bystanders if you do not know what you are doing.
- The pictures of the rifle parts in this manual are universal and used as an example to explain the working principle. They might not be equal to the parts in your rifle.
- Do not attempt to install this regulator yourself if you do not have a clear understanding of how these pcp rifles and regulators work.
- Do not attempt to install this regulator if you are not skilled to work on an air rifle; contact your local gunsmith to do the fitting.
- Installation and operation is done completely at your own risk.
- Installing this regulator might void your rifle's factory warranty.
- Your rifle may never be filled higher in pressure as stated in your rifle's manual.
- Do not attempt to fit this regulator in another rifle as mentioned in our order confirmation.
- These regulators are not suitable to use as a CO2 to HPA conversion, this could potentially be harmful or lethal to you or bystanders.
- We cannot be held liable for any accidents in relation to this regulator and its installation.

**Before you start, make sure that the rifle is unloaded, remove the magazine and make absolutely sure ALL the air is drained from the pressure tube. If there is a pressure gauge, it will give you just an indication. Dry fire the rifle or follow the manufacturer's instructions and double check to make sure all the air is out of the rifle**



**If the regulator is fitted and there is no output pressure after filling the pressure tube, something might be wrong causing the airflow to block totally.**

**Please beware even though there is no output pressure, the pressure tube/bottle is fully charged with high pressure air!!**

**If you are not able to relieve the pressure of the pressure tube according to the manufacturer's instructions or by dry firing the rifle then:**

**Contact a professional gunsmith to retrieve a solution!**

- **DO NOT try to unscrew or to open the pressure tube in any way.**
- **DO NOT try to pierce/drill or to use force to open the pressure tube or unscrew parts in an attempt to relieve the blocked pressure.**
- **These actions can cause serious injury or death to you or bystanders**

Before you start, we would like to advise you to read our manual how to [read and adjust the regulator pressure](#) and our [General Adjustment Tips](#) to set up your rifle perfect.

**Before you start, read the full manual.**

**This manual is a guideline and can be different in detail compared to your rifle.**

**Important Safety Notes:**

- These regulators are not suitable for stand-alone pressure bottles/buddy bottles.
- The maximum working pressure of this model is 300 Bar.
- Do not exceed the factory advised fill pressure of your rifle!

## **Fitting of the regulator**

As standard the package consists of:

Stainless steel regulator body

Blackened steel bottle adapter (screwn onto the regulator body)

Aluminium collar

G1/8" gauge



The regulator will extend the bottle forward approximately 31mm. For the Panthera we recommend to use of a grip with thumb shelf so your hand is located to the side of the grip.

This one for instance.

<https://huma-air.com/saber-tactical-ar-style-grip-with-thumb-rest-for-fx-impact-and-fx-maverick-st0049/>



The gauge on the regulator will show bottle pressure, the old one showing bottle pressure will show first stage regulator pressure and the regulator pressure gauge will still show 2<sup>nd</sup> stage regulator pressure.

The parts will be screwn together hand tight. For assembly best to separate the two.



**Pressure setting of your new regulator**

The regulator is delivered in a range of approximately 110 to 210 bar output pressure.

The set pressure of the regulator is marked on the label of the bag.

Setting the pressure can be done by adjusting the bronze colored set screw that is visible after removing the black bottle adapter.



A 5 minutes turn counter clockwise will give a pressure increase of about 4-5 bar. Or ca 25-30 bar for  $\frac{1}{2}$  a turn

The pressure range of this regulator is between 110 and 210 bar. Use a small screwdriver that fits the internal (2<sup>nd</sup> screwdriver slot of the regulator adjustment screw)

**Removing OEM FX bottle adapter and fill valve**

Before installation make sure that the bottle is removed and your rifle is completely empty! After you have confirmed this start with removing the bottle FX connector. It can be pretty tight. So be sure the finish of your rifle is protected!



Now remove the original fill valve. You'll reuse this on the collar.



Take your collar from the bag and screw in the fill foster into the hole that has a small slot on the bottom. The locating tab is also on this side of the collar.

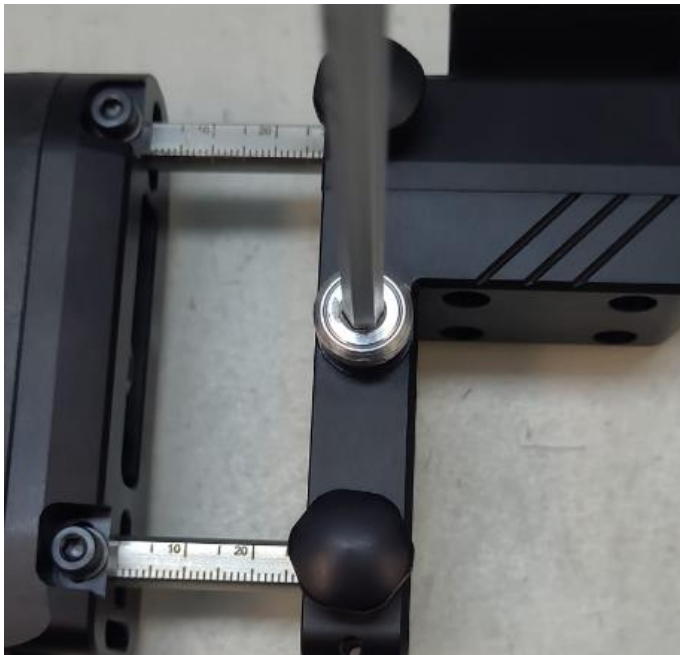


The Gauge will screw into the other side of the collar. That hole has no slot and only a flat bottom. You will need to use one of the two O-rings that come with the gauge. Insert it before screwing on the gauge.

After installation the collar looks like this



Now use the G1/8" plug in the old hole of the foster.





At this point you will have to mount the actual regulator in the hole of the bottle connection.

Tighten it sufficiently using a spanner.



Now put some silicone on the orings on the regulator and inside the collar and mount the collar over the regulator. The gauge can be oriented both left and right. So choose what is most convenient for you.



Now screw on the new bottle connector. Put some silicone on the small diameter that will seat into the colar.



Screw it on tightly. After installation it will look like this. You are now ready to screw on your bottle to check if everything is airtight.

