

HUMA-AIR.COM

Market Leader In Accuracy

Welcome to Huma-Air. We design and manufacture brand- and model specific precision regulators for PCP air rifles.

By using only the highest quality materials such as aircraft grade aluminum, aluminum-bronze, chrome-moly steel and precision belleville springs, our ultra-compact regulators are high performing with less than 1% fluctuation.

Regulator installation guide AiArms and CZ S200

HUMA-AIR



For adjustment tips, frequently asked questions and a complete list of installation manuals and instructions on how to adjust your Huma-Air regulator

<https://www.huma-air.com/Fitting-instructions>



Or go there directly by scanning the QR code



Before you you start, realize this;

- Working on a high pressure rifle could potentially be harmful or lethal to you or bystanders if you do not know what you are doing.
- The pictures of the rifleparts in this manual are universal and mend as an example to explain the working principle. They might not be equal to the parts in your rifle.
- Do not attempt to install this regulator yourself if you do not have a clear understanding of how these pcp rifles and regulators work.
- Do not attempt to install this regulator if you are not skilled to work on an air rifle; contact your local gunsmith to do the fitting.
- Installation and operation is done completely at your own risk.
- Installing this regulator might void your rifle's factory warranty.
- Your rifle may never be filled higher in pressure as stated in your rifle's manual.
- Do not attempt to fit this regulator in another rifle as mentioned in our order conformation.
- These regulators are not suitable to use as a CO2 to HPA conversion, this could potentially be harmful or lethal to you or bystanders.
- We cannot be held liable for any accidents in relation to this regulator and its installation.

Before you start, make sure that the rifle is unloaded, remove the magazine and make absolutely sure ALL the air is drained from the pressure tube. If there is a pressure gauge, it will give you just an indication. Dry fire the rifle or follow the manufactures instructions and double check to make sure all the air is out of the rifle



If the regulator is fitted and there is no output pressure after filling the pressure tube, something might be wrong causing the airflow to block totally.

Please beware even though there is no output pressure, the pressure tube is fully charged with high pressure air!!

If you are not able to relieve the pressure of the pressure tube according to the manufacture instructions or by dry firing the rifle then:

Contact a professional gunsmith to retrieve a solution!

- **DO NOT try to unscrew or to open the pressure tube in any way.**
- **DO NOT try to pierce/drill or to use force to open the pressure tube or unscrew parts in an attempt to relieve the blocked pressure.**
- **These actions can cause serious injury or death to you or bystanders**

Drain the pressure tube/air cylinder completely by dry firing or according to the manufactures instructions!

Before you start the assembly make sure your S200 has a way to fill the gun from the front, for this we have a very simple foster and a bit more soffisticated quickfill with gauge

<https://huma-air.com/huma-air-quickfill-for-the-air-arms-s200/>

<https://huma-air.com/air-arms-s200-quickfill-with-pressure-gauge-by-huma-air/>

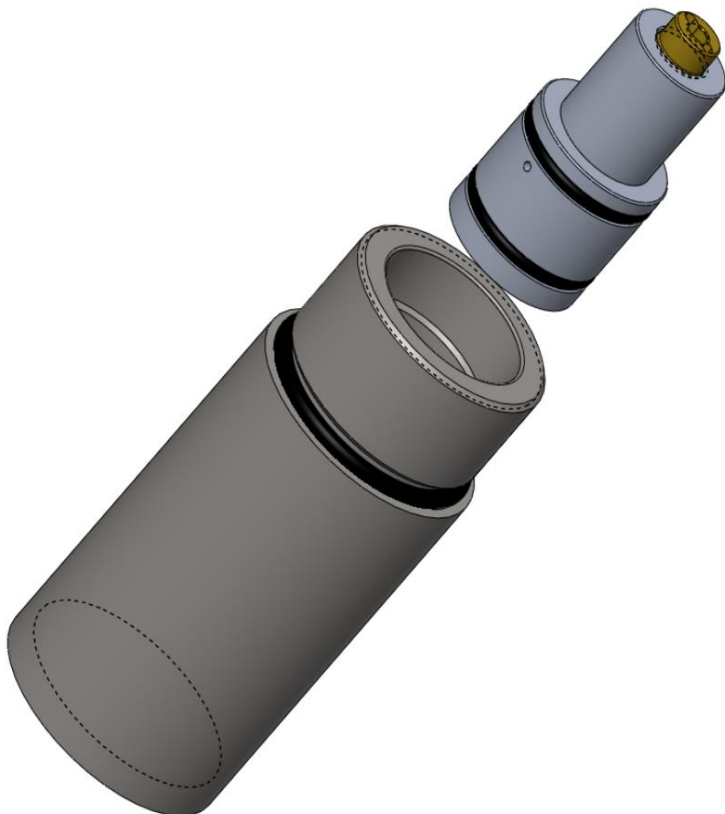
After that we recommend following the installation instruction depicted by Darrin from XTX-Air (unfortunately he stopped his business), but his video's are still online.

<https://www.youtube.com/watch?v=0GJktoc2y1A>

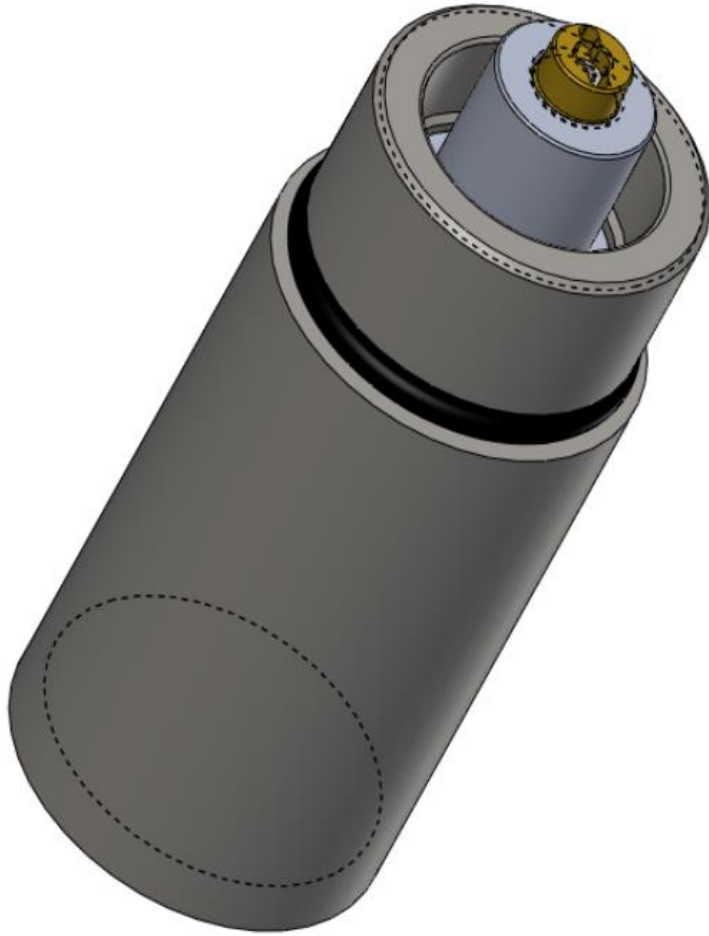
In his video he depicts a tube disassembly tool, which we also sell.

<https://huma-air.com/air-arms-s200-and-cz200-fill-valve-and-firing-valve-removal-tool/>

The regulator comes supplied as a two piece affair. The actual regulator (item # 1910 base regulator) and an adapter (. Now before installation these two need to be put together). Watch the orientation of the regulator



After assembly it will look like this



After this you can follow the rest of the instructions as depicted in the video of XTX.